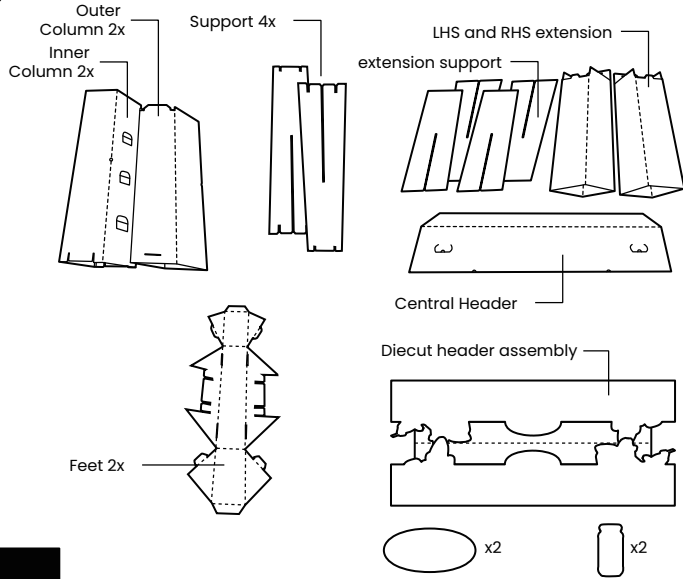


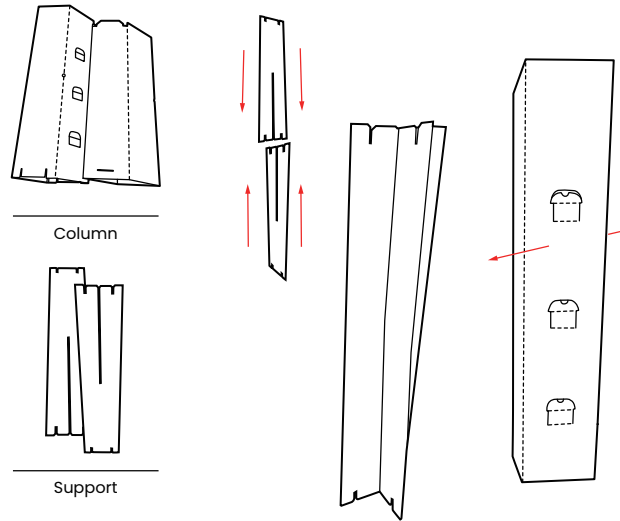
# 2449-Simplot

## Leggos\_Archway\_Winter 2026- ASSEMBLY INSTRUCTIONS

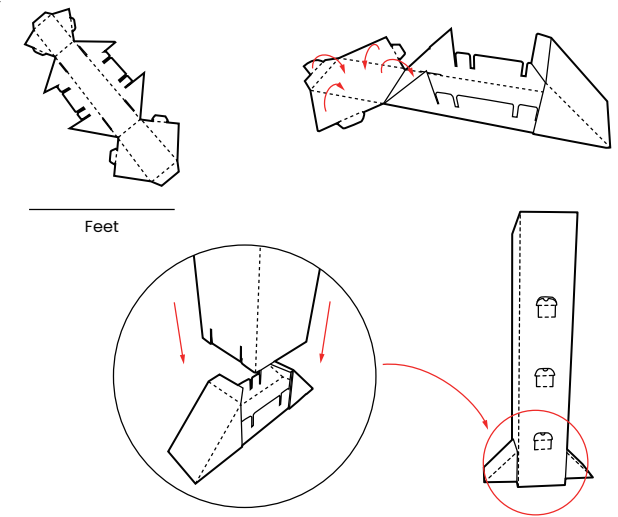
retail logic  
Instore Presence Solutions



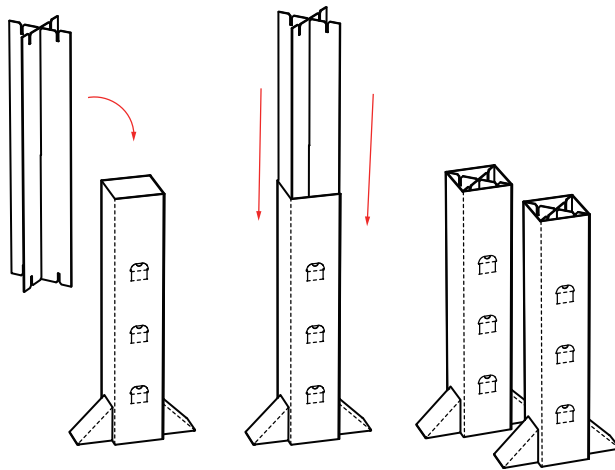
**1** Open the box and check that all parts shown are included.



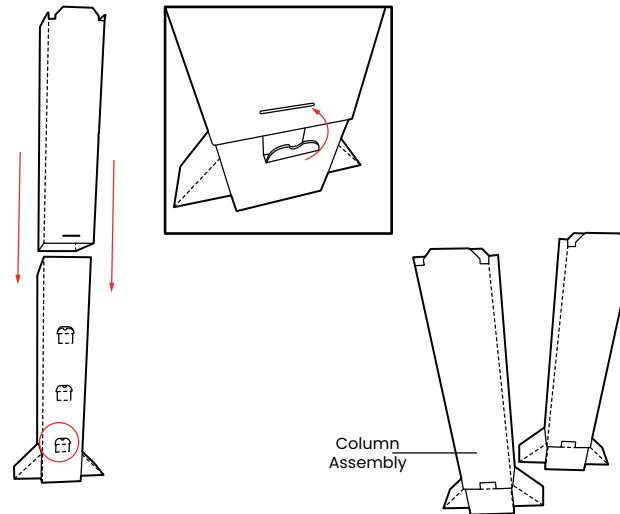
**2** Locate the inner column, unfold into a box and place upright. Locate the support and form a cross support. Repeat 2 times.



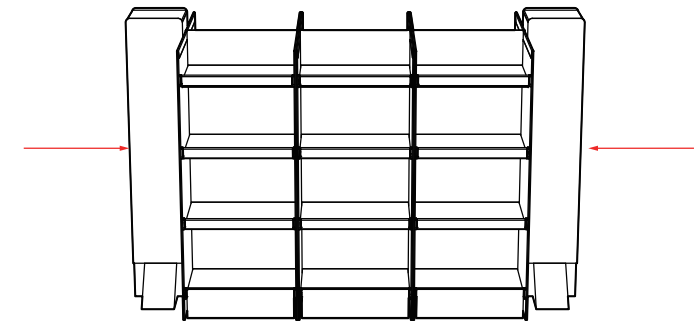
**3** Locate the feet, unfold into shape as shown. Place on the base of the column, ensure to engage the slots together. Repeat 2 times.



Slide the cross support into the inner column diagonally. Repeat 2 times.



**5** Locate the outer column and unfold into a box and slide over the inner column piece. Lock in place using the bottom tab into the slot. Repeat 2 times.

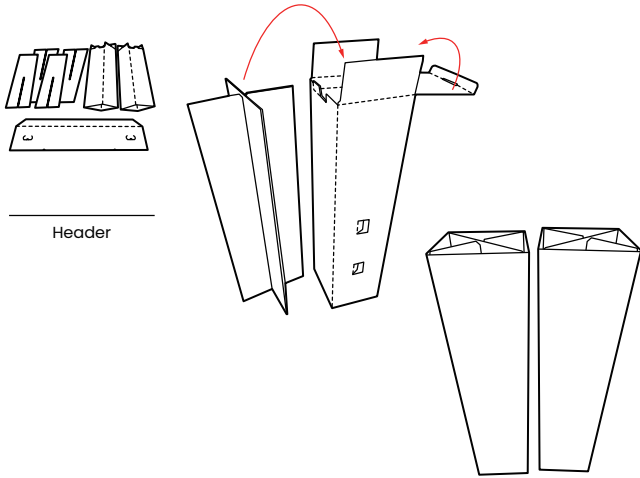


Locate a 3 wide tower (back to back) assembly and place the column assembly on either side as shown. Ensure the feet is facing forward.

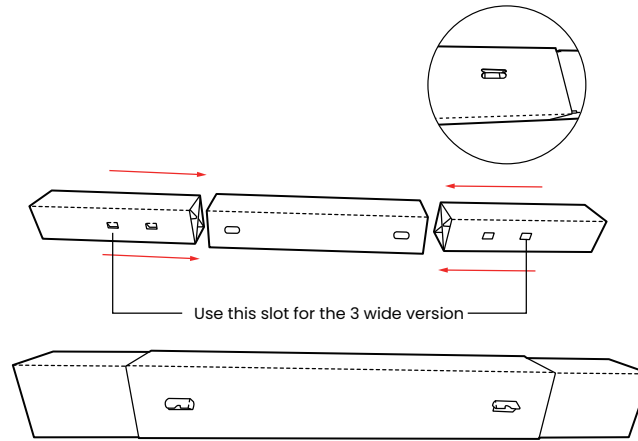
# 2449-Simplot

## Leggos\_Archway\_Winter 2026- ASSEMBLY INSTRUCTIONS

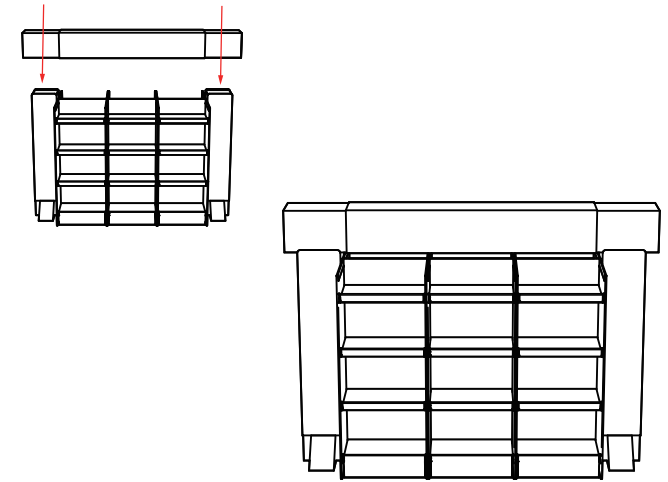
retail logic  
Instore Presence Solutions



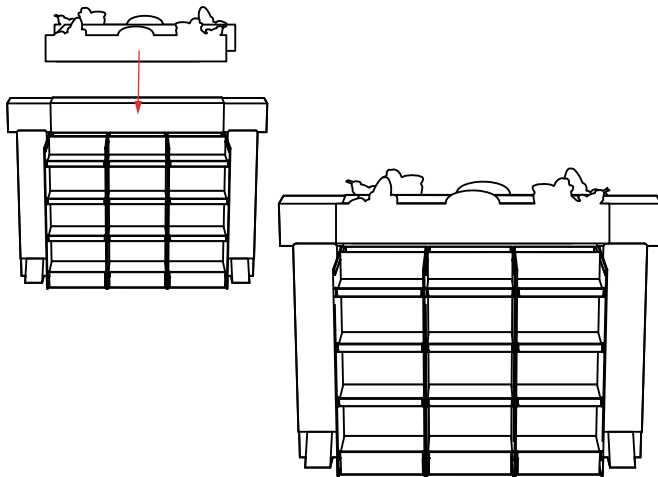
**7** Locate the header LHS extension, unfold into a box. Locate the header support and form a cross support. Slide the header cross support into the LHS extension diagonally. Repeat for the RHS extension.



**8** Unfold the central header and place the LHS and RHS on either side. Slide both sides into the central header. Ensure the graphics is facing front and rear. Lock into place from the top by pushing in the tab in the slot x 2.



**9** Place the archway header assembly on top of the 2 columns. The slots on either side of the header assembly should align with the tabs on the columns.



**10** Locate the diecut header assembly, raise the centre panel up. Secure the spacer between mountains by engaging the tabs and slots as shown in 10.1, repeat 6 times. Place the diecut header over the archway.



**11** Assembly finished. Fill as per planogram

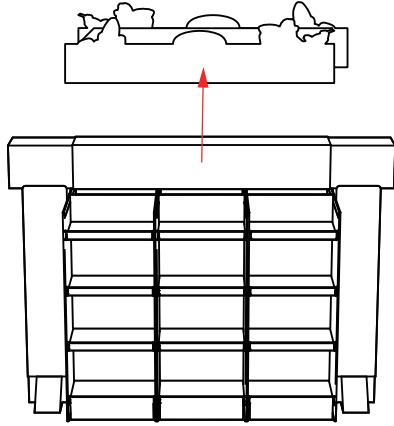
**10**

**11**

# 2449-Simplot

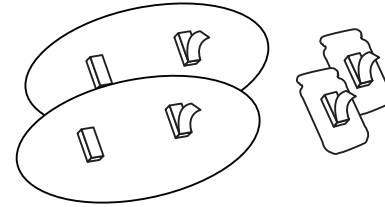
Leggos\_Archway\_Winter 2026-  
ASSEMBLY INSTRUCTIONS

**retail logic**  
Instore Presence Solutions



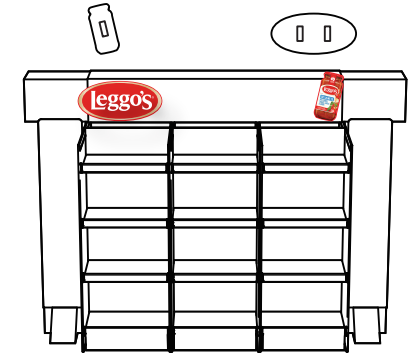
Remove the Diecut header assembly

**1**



Please enter text

**2**



Please enter text

**3**



Assembly finished. Fill as per planogram

**4**